

MONTHLY MEMBERSHIP PROGRESS REPORT

District 11 C1

Results as of: 4/30/2026

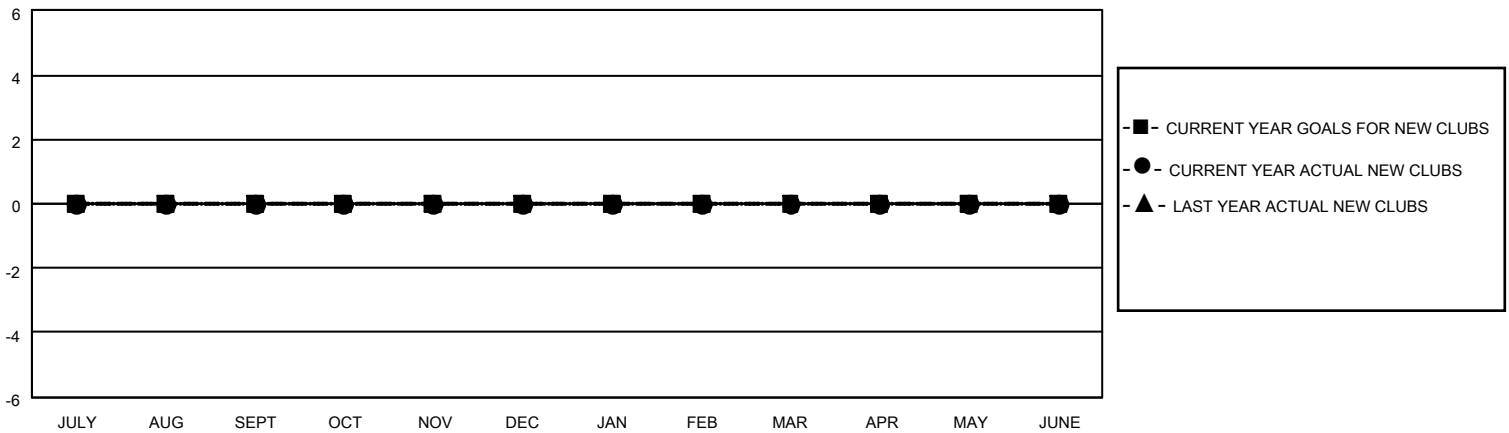
GMT:

LOCATION MICHIGAN

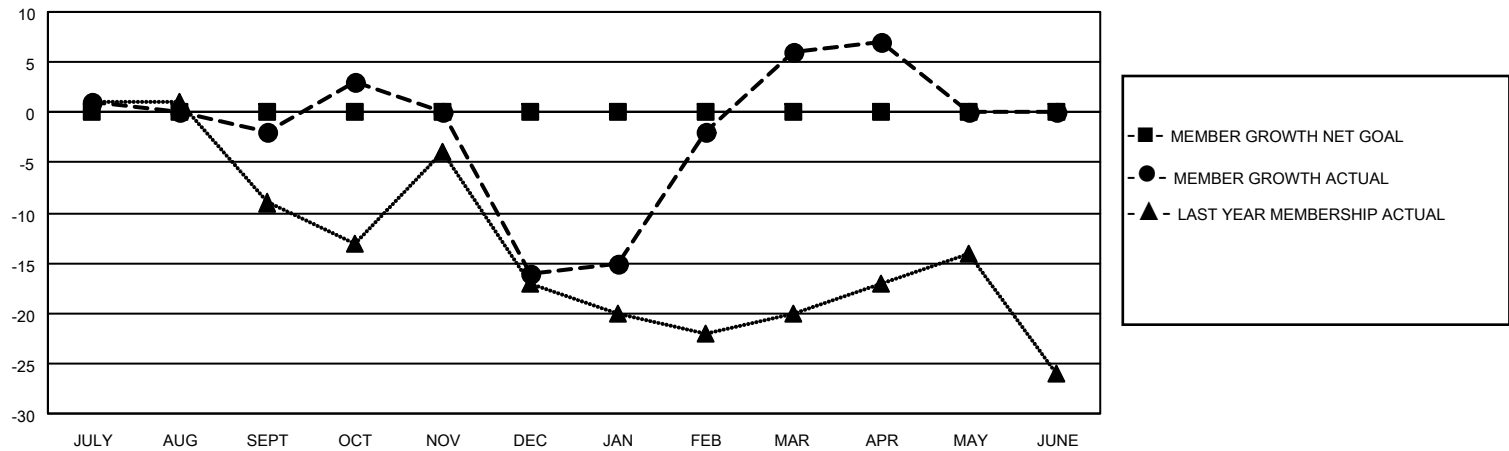
GMT CA

Clubs				Members			
RESULTS FOR 2025-2026				RESULTS FOR 2025-2026			
QUARTER	NEW CLUB GOAL	NEW CLUBS	DROPPED CLUBS	QUARTER	MEMBER GROWTH NET GOAL	MEMBER GROWTH ACTUAL	DROPPED MEMBERS ACTUAL (including transfers)
JULY/AUG/SEPT	0	0	0	JULY/AUG/SEPT	0	8	9
OCT/NOV/DEC	0	0	0	OCT/NOV/DEC	0	15	28
JAN/FEB/MAR	0	0	0	JAN/FEB/MAR	0	25	3
APR/MAY/JUNE	0	0	0	APR/MAY/JUNE	0	4	3

GOALS AND ACTUAL NEW CLUBS CUMULATIVE



GOALS AND ACTUAL MEMBERS CUMULATIVE



DROPPED CLUBS: 0	12 CLUBS OF 25 ADDED 1 OR MORE NEW MEMBERS	GENDER DISTRIBUTION MALE 454 (63.41%) FEMALE 262 (36.59%)
DROPPED MEMBERS DECEASED 8 CLUB CANCELLED 0 OTHER 34 TOTAL 42	CLICK HERE FOR CUMULATIVE MEMBERSHIP DATA	TOTAL FAMILY UNIT MEMBERS 159 FAMILY MEMBERS PAYING HALF DUES 80